

Classic Journey through the Clouds Vacation

Vancouver–Jasper with pre-tour Cruise (Eastbound)

(12 nights/13 days)



Package Includes

- 2 day Rocky Mountaineer RedLeaf Service
- 7 night Glacier Bay Inside Passage Cruise, Outside Verandah Stateroom
- 9 breakfasts, 8 lunches, 7 dinners
- 5 nights hotel accommodation
- Rail station transfers in Vancouver, Kamloops and Jasper
- Taxi transfer from cruise terminal
- Luggage handling and National Park Pass

Note: Rail cruise itinerary is 2 nights longer than rail itinerary with 2 extra nights in Vancouver.

Not Included

- Transportation from Vancouver airport
- Transportation from Jasper
- Meals, other than specified
- Activities, other than specified
- Onboard ship gratuities charged at USD \$10 per person per day plus 15% on liquor gratuities (subject to change)
- Gratuities for rail, hotel and transfer staff
- Port charges and taxes of \$135 per person
- Fuel surcharges
- GST: Please note GST on the cruise component of this package is not rebateable. Operators paying 2.5% GST on the package price will need to collect an additional 2.5% of the cruise component. Values by departure date are noted below.

Eastbound Itinerary

Day	Activities	Overnight
1	Embarkation	Holland America's ms Zuiderdam
2	At Sea	Holland America's ms Zuiderdam
3	Juneau, Alaska	Holland America's ms Zuiderdam
4	Skagway, Alaska	Holland America's ms Zuiderdam
5	Glacier Bay Scenic Cruising	Holland America's ms Zuiderdam
6	Ketchikan, Alaska	Holland America's ms Zuiderdam
7	At Sea	Holland America's ms Zuiderdam
8	Taxi transfer to hotel	Vancouver
9	Free day in Vancouver	Vancouver
10	Free day in Vancouver	Vancouver
11	Rocky Mountaineer to Kamloops	Kamloops
12	Rocky Mountaineer to Jasper	Jasper
13	Vacation ends	

Cruise accommodation is based on Deluxe Outside Verandah Stateroom (Category VC)

Additional GST on Cruise				
	Single	Double	Triple	Child
08 May	\$83.28	\$43.83	\$36.33	\$14.75
15 May	\$100.38	\$52.83	\$42.33	\$14.75
22 May	\$100.38	\$52.83	\$42.33	\$14.75
29 May	\$106.08	\$55.83	\$44.33	\$14.75
05 Jun	\$111.78	\$58.83	\$46.33	\$14.75
12 Jun	\$117.48	\$61.83	\$48.33	\$14.75
19 Jun–07 Aug	\$126.03	\$66.33	\$51.33	\$14.75
14 Aug	\$117.48	\$61.83	\$48.33	\$14.75
21 Aug	\$111.78	\$58.83	\$46.33	\$14.75
28 Aug–04 Sep	\$106.08	\$55.83	\$44.33	\$14.75

Classic Journey through the Clouds Vacation, Vancouver–Jasper with pre-tour Cruise (Eastbound)

2010 Package Tour Prices

RedLeaf Service						
Starts Vancouver	Single	Double	Triple	Child	Rail Seat Upgrade per person	Accommodation
08 May	\$4,999	\$2,949	\$2,559	\$1,299	\$880	Vancouver Hampton Inn
15 May	\$5,659	\$3,299	\$2,789	\$1,299	\$880	Jasper Lobstick Lodge
22 May	\$5,949	\$3,539	\$2,999	\$1,479	\$880	
29 May	\$6,299	\$3,719	\$3,119	\$1,479	\$880	
05 Jun	\$6,539	\$3,839	\$3,199	\$1,479	\$880	
12 Jun	\$6,759	\$3,959	\$3,279	\$1,479	\$880	
19 Jun–07 Aug	\$7,089	\$4,139	\$3,389	\$1,479	\$880	
14 Aug	\$6,759	\$3,959	\$3,279	\$1,479	\$880	
21 Aug	\$6,539	\$3,839	\$3,199	\$1,479	\$880	
28 Aug–04 Sep	\$6,189	\$3,659	\$3,079	\$1,479	\$880	
Modified American Plan	\$258 per adult / \$136 per child					

GoldLeaf Service						
Starts Vancouver	Single	Double	Triple	Child	Accommodation	
08 May	\$6,369	\$4,099	\$3,679	\$2,299	Vancouver	Fairmont Waterfront Hotel, Fairmont room
15 May	\$7,029	\$4,439	\$3,899	\$2,299	Jasper	Fairmont Jasper Park Lodge, Fairmont room
22 May	\$7,389	\$4,699	\$4,139	\$2,469		
29 May	\$7,729	\$4,889	\$4,249	\$2,469		
05 Jun	\$7,949	\$4,999	\$4,329	\$2,469		
12 Jun	\$8,169	\$5,119	\$4,399	\$2,469		
19 Jun–07 Aug	\$8,499	\$5,299	\$4,519	\$2,469		
14 Aug	\$8,169	\$5,119	\$4,399	\$2,469		
21 Aug	\$7,949	\$4,999	\$4,329	\$2,469		
28 Aug–04 Sep	\$7,599	\$4,799	\$4,199	\$2,469		
Modified American Plan	\$507 per adult / \$256 per child					

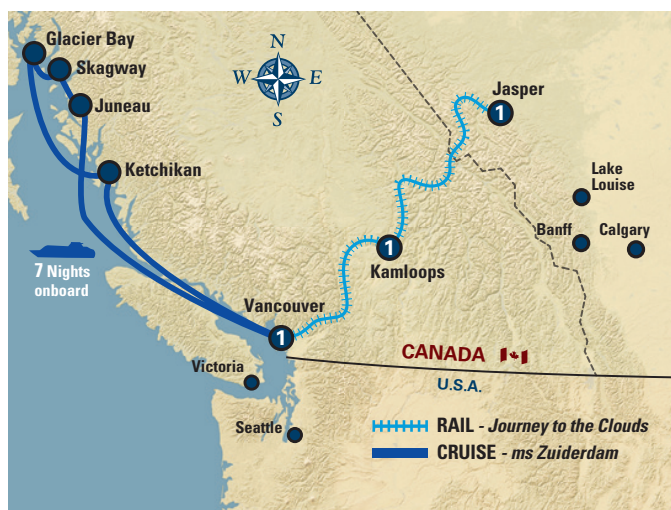
Fairmont Deluxe & GoldLeaf Service						
Starts Vancouver	Single	Double	Triple	Child	Accommodation	
08 May	\$6,769	\$4,299	\$3,779	\$2,199	Vancouver	Fairmont Pacific Rim, Deluxe Harbour View room
15 May	\$7,419	\$4,639	\$3,999	\$2,199	Jasper	Fairmont Jasper Park Lodge, Deluxe room
22 May	\$7,759	\$4,899	\$4,239	\$2,399		
29 May	\$8,099	\$5,099	\$4,359	\$2,399		
05 Jun	\$8,329	\$5,199	\$4,429	\$2,399		
12 Jun	\$8,549	\$5,299	\$4,499	\$2,399		
19 Jun–07 Aug	\$8,879	\$5,479	\$4,619	\$2,399		
14 Aug	\$8,549	\$5,299	\$4,499	\$2,399		
21 Aug	\$8,329	\$5,199	\$4,429	\$2,399		
28 Aug–04 Sep	\$7,989	\$4,999	\$4,299	\$2,399		
Modified American Plan	\$547 per adult / \$276 per child					

2010 Package Tour Start Dates:	
Starts Vancouver (Eastbound)	
Saturdays	
May	8 15 22 29
Jun	5 12 19 26
Jul	3 10 17 24 31
Aug	7 14 21 28
Sep	4

Classic Journey through the Clouds Vacation

Jasper-Vancouver with post-tour Cruise (Westbound)

(10 nights/11 days)



Package Includes

- 2 day Rocky Mountaineer RedLeaf Service
- 7 night Glacier Bay Inside Passage Cruise, Outside Verandah Stateroom
- 9 breakfasts, 8 lunches, 7 dinners`
- 3 nights hotel accommodation
- Rail station transfers in Jasper, Kamloops and Vancouver
- Taxi transfer to cruise terminal
- Luggage handling and National Park Pass

Not Included

- Transportation to Jasper
- Transportation to Vancouver airport
- Meals, other than specified
- Activities, other than specified
- Onboard ship gratuities charged at USD \$10 per person per day plus 15% on liquor gratuities (subject to change)
- Gratuities for rail, hotel and transfer staff
- Port charges and taxes of \$135 per person
- Fuel surcharges
- GST: Please note GST on the cruise component of this package is not rebateable. Operators paying 2.5% GST on the package price will need to collect an additional 2.5% of the cruise component. Values by departure date are noted below.

Westbound Itinerary

Day	Activities	Overnight
1	Arrive in Jasper	Jasper
2	Rocky Mountaineer to Kamloops	Kamloops
3	Rocky Mountaineer to Vancouver	Vancouver
4	Taxi transfer to cruise terminal	Holland America's ms Zuiderdam
5	At Sea	Holland America's ms Zuiderdam
6	Juneau, Alaska	Holland America's ms Zuiderdam
7	Skagway, Alaska	Holland America's ms Zuiderdam
8	Glacier Bay Scenic Cruising	Holland America's ms Zuiderdam
9	Ketchikan, Alaska	Holland America's ms Zuiderdam
10	At Sea	Holland America's ms Zuiderdam
11	Vacation ends	

Cruise accommodation is based on Deluxe Outside Verandah Stateroom (Category VC)

Additional GST on Cruise				
	Single	Double	Triple	Child
05 May	\$83.28	\$43.83	\$36.33	\$14.75
12 May-19 May	\$100.38	\$52.83	\$42.33	\$14.75
26 May	\$106.08	\$55.83	\$44.33	\$14.75
02 Jun	\$111.78	\$58.83	\$46.33	\$14.75
09 Jun	\$117.48	\$61.83	\$48.33	\$14.75
16 Jun-04 Aug	\$126.03	\$66.33	\$51.33	\$14.75
11 Aug	\$117.48	\$61.83	\$48.33	\$14.75
18 Aug	\$111.78	\$58.83	\$46.33	\$14.75
25 Aug-01 Sep	\$106.08	\$55.83	\$44.33	\$14.75
08 Sep	\$100.38	\$52.83	\$42.33	\$14.75
15 Sep	\$83.28	\$43.83	\$36.33	\$14.75

Classic Journey through the Clouds Vacation, Jasper-Vancouver with post-tour Cruise (Westbound)

2010 Package Tour Prices

RedLeaf Service							
Starts Jasper	Single	Double	Triple	Child	Rail Seat Upgrade per person	Accommodation	
05 May	\$4,559	\$2,699	\$2,379	\$1,299	\$880	Jasper Lobstick Lodge Vancouver Hampton Inn	
12 May-19 May	\$5,229	\$3,099	\$2,599	\$1,299	\$880		
26 May	\$5,459	\$3,199	\$2,679	\$1,299	\$880		
02 Jun	\$5,999	\$3,569	\$2,989	\$1,459	\$880		
09 Jun	\$6,239	\$3,689	\$3,069	\$1,459	\$880		
16 Jun-04 Aug	\$6,579	\$3,869	\$3,189	\$1,459	\$880		
11 Aug	\$6,239	\$3,689	\$3,069	\$1,459	\$880		
18 Aug	\$5,999	\$3,569	\$2,989	\$1,459	\$880		
25 Aug-01 Sep	\$5,669	\$3,389	\$2,869	\$1,459	\$880		
08 Sep	\$5,569	\$3,329	\$2,839	\$1,459	\$880		
15 Sep	\$4,899	\$2,999	\$2,599	\$1,459	\$880		
Modified American Plan	\$157 per adult / \$92 per child						

GoldLeaf Service								
Starts Jasper	Single	Double	Triple	Child	Accommodation			
05 May	\$5,789	\$3,799	\$3,439	\$2,299	Jasper Vancouver	Fairmont Jasper Park Lodge, Fairmont room Fairmont Waterfront Hotel, Fairmont room		
12 May-19 May	\$6,459	\$4,139	\$3,659	\$2,299				
26 May	\$6,689	\$4,259	\$3,739	\$2,299				
02 Jun	\$7,299	\$4,669	\$4,059	\$2,429				
09 Jun	\$7,539	\$4,799	\$4,139	\$2,429				
16 Jun-04 Aug	\$7,869	\$4,959	\$4,259	\$2,429				
11 Aug	\$7,539	\$4,799	\$4,139	\$2,429				
18 Aug	\$7,299	\$4,669	\$4,059	\$2,429				
25 Aug-01 Sep	\$6,959	\$4,489	\$3,939	\$2,429				
08 Sep	\$6,869	\$4,429	\$3,899	\$2,429				
15 Sep	\$6,199	\$4,099	\$3,689	\$2,429				
Modified American Plan	\$272 per adult / \$131 per child							

Fairmont Deluxe & GoldLeaf Service								
Starts Jasper	Single	Double	Triple	Child	Accommodation			
05 May	\$5,989	\$3,899	\$3,469	\$2,199	Jasper Vancouver	Fairmont Jasper Park Lodge, Deluxe room Fairmont Pacific Rim, Deluxe Harbour View room		
12 May-19 May	\$6,659	\$4,239	\$3,699	\$2,199				
26 May	\$6,879	\$4,359	\$3,769	\$2,199				
02 Jun	\$7,489	\$4,759	\$4,099	\$2,399				
09 Jun	\$7,699	\$4,869	\$4,169	\$2,399				
16 Jun-04 Aug	\$8,049	\$4,999	\$4,289	\$2,399				
11 Aug	\$7,699	\$4,869	\$4,169	\$2,399				
18 Aug	\$7,489	\$4,759	\$4,099	\$2,399				
25 Aug-01 Sep	\$7,139	\$4,569	\$3,979	\$2,399				
08 Sep	\$7,039	\$4,499	\$3,949	\$2,399				
15 Sep	\$6,389	\$4,179	\$3,719	\$2,399				
Modified American Plan	\$285 per adult / \$138 per child							

2010 Package Tour Start Dates:	
Starts Jasper (Westbound)	
Wednesdays	
May	5 12 19 26
Jun	2 9 16 23 30
Jul	7 14 21 28
Aug	4 11 18 25
Sep	1 8 15