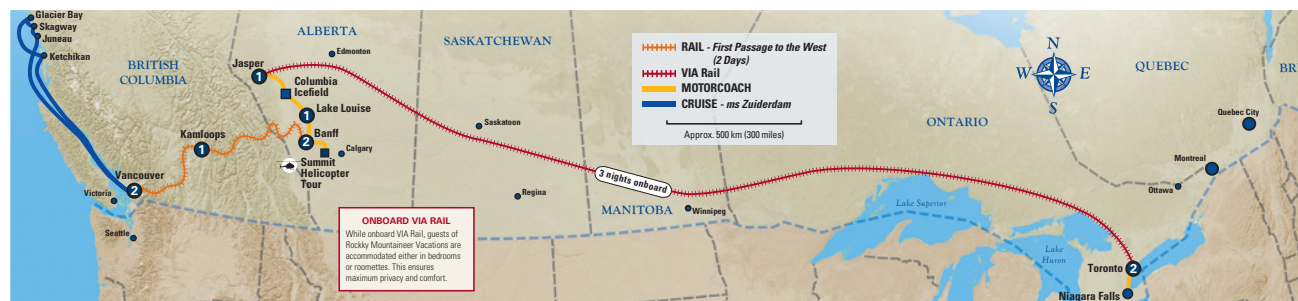


Trans-Canada Rail Adventure with pre-tour Cruise (Eastbound)

(19 nights/20 days)



Eastbound Itinerary

Day	Activities	Overnight
1	Embarkation	Holland America's ms Zuiderdam
2	At Sea	Holland America's ms Zuiderdam
3	Juneau, Alaska	Holland America's ms Zuiderdam
4	Skagway, Alaska	Holland America's ms Zuiderdam
5	Glacier Bay Scenic Cruising	Holland America's ms Zuiderdam
6	Ketchikan, Alaska	Holland America's ms Zuiderdam
7	At Sea	Holland America's ms Zuiderdam
8	Taxi transfer to hotel	Vancouver
9	Free day in Vancouver	Vancouver
10	Rocky Mountaineer to Kamloops	Kamloops
11	Rocky Mountaineer to Banff	Banff
12	Banff Tour with Gondola and Summit Helicopter	Banff
13	Yoho Park Tour. Transfer to Lake Louise	Lake Louise
14	Icefields Parkway Tour, including Ice Explorer	Jasper
15	VIA Rail from Jasper to Toronto	VIA Rail
16	VIA Rail from Jasper to Toronto	VIA Rail
17	VIA Rail from Jasper to Toronto	VIA Rail
18	Arrive in Toronto	Toronto
19	Niagara Falls Tour	Toronto
20	Vacation ends	

Cruise accommodation is based on Deluxe Outside Verandah Stateroom (Category VC)

Note: Rail cruise itinerary is 1 night longer than rail itinerary with 1 extra night in Vancouver.

Package Includes

- 2 day Rocky Mountaineer RedLeaf Service
- 7 night Glacier Bay Inside Passage Cruise, Outside Verandah Stateroom
- 12 breakfasts, 11 lunches, 10 dinners
- 9 nights hotel accommodation
- 3 nights cabin accommodation onboard VIA rail
- Exclusive Attractions Pass
- VIA rail from Jasper to Toronto
- Banff Tour, including Banff Gondola
- Summit Helicopter Flightseeing
- Guided lakeshore stroll at The Fairmont Chateau Lake Louise
- Yoho Park Tour, Banff to Lake Louise
- Icefields Parkway Tour, including Ice Explorer, Lake Louise to Jasper
- Niagara Falls Tour
- Rail station transfers in Vancouver, Kamloops, Banff, Jasper and Toronto
- Taxi transfer from cruise terminal
- Luggage handling and National Park Pass

Not Included

- Transportation from Vancouver airport
- Transportation to Toronto airport
- Meals, other than specified
- Activities, other than specified
- Luggage handling in Toronto and VIA rail
- Onboard ship gratuities charged at USD \$10 per person per day plus 15% on liquor gratuities (subject to change)
- Gratuities for rail, hotel and transfer staff
- Port charges and taxes of \$135 per person
- Fuel surcharges
- GST: Please note GST on the cruise and VIA rail components of this package is not rebatable. Operators paying 2.5% GST on the package price will need to collect an additional 2.5% of the cruise component. Values by departure date are noted below.

Additional GST on VIA Rail and Cruise				
	Single	Double	Triple	Child
08 May	\$107.70	\$68.25	\$60.75	\$39.18
15 May	\$124.80	\$77.25	\$66.75	\$39.18
22 May	\$140.40	\$92.85	\$82.35	\$54.78
29 May	\$146.10	\$95.85	\$84.35	\$54.78
05 Jun	\$151.80	\$98.85	\$86.35	\$54.78
12 Jun	\$157.50	\$101.85	\$88.35	\$54.78
19 Jun-31 Jul	\$166.05	\$106.35	\$91.35	\$54.78
14 Aug	\$157.50	\$101.85	\$88.35	\$54.78
21 Aug	\$151.80	\$98.85	\$86.35	\$54.78
28 Aug-04 Sep	\$146.10	\$95.85	\$84.35	\$54.78

Changes to 2009 Product:

NEW FOR 2010

Trans-Canada Rail Adventure with pre-tour Cruise (Eastbound)

2010 Package Tour Prices

RedLeaf Service						
Starts Vancouver	Single	Double	Triple	Child	Rail Seat Upgrade per Adult Child	Accommodation
08 May	\$7,899	\$5,399	\$4,939	\$3,099	\$880	Vancouver Cascadia Hotel and Suites
15 May	\$8,499	\$5,699	\$5,119	\$3,099	\$880	Banff Banff Ptarmigan Inn
22 May	\$9,739	\$6,679	\$6,049	\$4,049	\$880	Lake Louise Fairmont Chateau Lake Louise, Fairmont room
29 May	\$10,199	\$6,999	\$6,319	\$4,049	\$880	Jasper Whistlers Inn
05 Jun	\$10,399	\$7,099	\$6,379	\$4,049	\$880	Toronto Hilton Garden Inn
12 Jun	\$10,619	\$7,199	\$6,439	\$4,049	\$880	
19 Jun-31 Jul	\$10,929	\$7,359	\$6,539	\$4,049	\$880	
14 Aug	\$10,619	\$7,199	\$6,439	\$4,049	\$880	
21 Aug	\$10,399	\$7,099	\$6,379	\$4,049	\$880	
28 Aug-04 Sep	\$10,089	\$6,939	\$6,269	\$4,049	\$880	
Modified American Plan	\$759 per adult / \$407 per child					

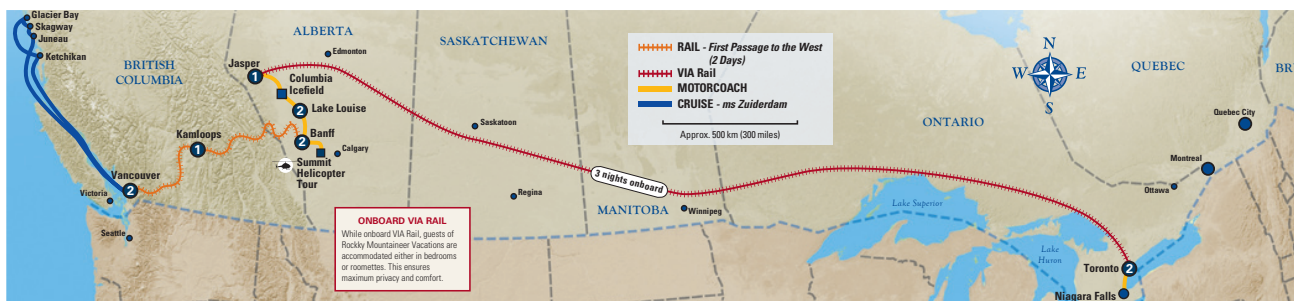
GoldLeaf Service						
Starts Vancouver	Single	Double	Triple	Child		Accommodation
08 May	\$10,029	\$6,939	\$6,389	\$4,289	Vancouver	Fairmont Hotel Vancouver, Fairmont room
15 May	\$10,599	\$7,199	\$6,549	\$4,289	Banff	Fairmont Banff Springs, Fairmont room
22 May	\$12,299	\$8,399	\$7,579	\$4,999	Lake Louise	Fairmont Chateau Lake Louise, Fairmont Lakeview room
29 May	\$12,759	\$8,739	\$7,839	\$4,999	Jasper	Fairmont Jasper Park Lodge, Fairmont room
05 Jun	\$12,959	\$8,829	\$7,899	\$4,999	Toronto	Fairmont Royal York, Fairmont room
12 Jun	\$13,159	\$8,929	\$7,959	\$4,999		
19 Jun-31 Jul	\$13,459	\$9,099	\$7,999	\$4,999		
14 Aug	\$13,159	\$8,929	\$7,959	\$4,999		
21 Aug	\$12,959	\$8,829	\$7,899	\$4,999		
28 Aug-04 Sep	\$12,639	\$8,669	\$7,799	\$4,999		
Modified American Plan	\$1,030 per adult / \$495 per child					

Fairmont Deluxe & GoldLeaf Service						
Starts Vancouver	Single	Double	Triple	Child		Accommodation
08 May	\$10,939	\$7,399	\$6,579	\$3,949	Vancouver	Fairmont Pacific Rim, Deluxe Harbour View room
15 May	\$11,499	\$7,669	\$6,749	\$3,949	Banff	Fairmont Banff Springs, Deluxe room
22 May	\$13,279	\$8,899	\$7,799	\$4,749	Lake Louise	Fairmont Chateau Lake Louise, Deluxe Lakeview room
29 May	\$13,739	\$9,199	\$8,069	\$4,749	Jasper	Fairmont Jasper Park Lodge, Deluxe room
05 Jun	\$13,929	\$9,299	\$8,119	\$4,749	Toronto	Fairmont Royal York, Deluxe room
12 Jun	\$14,119	\$9,399	\$8,179	\$4,749		
19 Jun-31 Jul	\$14,419	\$9,569	\$8,279	\$4,749		
14 Aug	\$14,119	\$9,399	\$8,179	\$4,749		
21 Aug	\$13,929	\$9,299	\$8,119	\$4,749		
28 Aug-04 Sep	\$13,599	\$9,199	\$8,019	\$4,749		
Modified American Plan	\$1,061 per adult / \$510 per child					

2010 Package Tour Start Dates:	
Starts Vancouver (Eastbound)	
Saturdays	
May	8 15 22 29
Jun	5 12 19
Jul	3 17 31
Aug	14 21 28
Sep	4

Trans-Canada Rail Adventure with post-tour Cruise (Westbound)

(20 nights/21 days)



Westbound Itinerary

Day	Activities	Overnight
1	Arrive in Toronto	Toronto
2	Niagara Falls Tour	Toronto
3	VIA Rail from Toronto to Jasper	VIA Rail
4	VIA Rail from Toronto to Jasper	VIA Rail
5	VIA Rail from Toronto to Jasper	VIA Rail
6	Arrive in Jasper	Jasper
7	Icefields Parkway Tour, including Ice Explorer	Lake Louise
8	Free day in Lake Louise	Lake Louise
9	Yoho Park Tour. Transfer to Banff	Banff
10	Banff Tour with Gondola and Summit Helicopter	Banff
11	Rocky Mountaineer to Kamloops	Kamloops
12	Rocky Mountaineer to Vancouver	Vancouver
13	Free day in Vancouver	Vancouver
14	Taxi transfer to cruise terminal	Holland America's ms Zuiderdam
15	At Sea	Holland America's ms Zuiderdam
16	Juneau, Alaska	Holland America's ms Zuiderdam
17	Skagway, Alaska	Holland America's ms Zuiderdam
18	Glacier Bay Scenic Cruising	Holland America's ms Zuiderdam
19	Ketchikan, Alaska	Holland America's ms Zuiderdam
20	At Sea	Holland America's ms Zuiderdam
21	Vacation ends	

Cruise accommodation is based on Deluxe Outside Verandah Stateroom (Category VC)

Note: Rail cruise itinerary is 1 night longer than rail itinerary with 1 extra night in Vancouver.

Package Includes

- 2 day Rocky Mountaineer RedLeaf Service
- 7 night Glacier Bay Inside Passage Cruise, Outside Verandah Stateroom
- 12 breakfasts, 12 lunches, 9 dinners
- 10 nights hotel accommodation
- 3 nights cabin accommodation onboard VIA rail
- Exclusive Attractions Pass
- VIA rail from Toronto to Jasper
- Niagara Falls Tour
- Icefields Parkway Tour, including Ice Explorer, Jasper to Lake Louise
- Yoho Park Tour, Lake Louise to Banff
- Guided lakeshore stroll at The Fairmont Chateau Lake Louise
- Banff Tour, including Banff Gondola
- Summit Helicopter Flightseeing
- Rail station transfers in Toronto, Jasper, Kamloops, Banff and Vancouver
- Taxi transfer to cruise terminal
- Luggage handling and National Park Pass

Not Included

- Transportation from Toronto airport
- Transportation to Vancouver airport
- Meals, other than specified
- Activities, other than specified
- Luggage handling in Toronto and VIA rail
- Onboard ship gratuities charged at USD \$10 per person per day plus 15% on liquor gratuities (subject to change)
- Gratuities for rail, hotel and transfer staff
- Port charges and taxes of \$135 per person
- Fuel surcharges
- GST: Please note GST on the cruise and VIA rail components of this package is not rebatable. Operators paying 2.5% GST on the package price will need to collect an additional 2.5% of the cruise component. Values by departure date are noted with the pricing tables.

Additional GST on VIA Rail and Cruise				
	Single	Double	Triple	Child
25 Apr	\$107.70	\$68.25	\$60.75	\$39.18
02 May-09 May	\$124.80	\$77.25	\$66.75	\$39.18
16 May	\$130.50	\$80.25	\$68.75	\$39.18
23 May	\$136.20	\$83.25	\$70.75	\$39.18
30 May	\$157.50	\$101.85	\$88.35	\$54.78
06 Jun-18 Jul	\$166.05	\$106.35	\$91.35	\$54.78
01 Aug	\$157.50	\$101.85	\$88.35	\$54.78
15 Aug-22 Aug	\$146.10	\$95.85	\$84.35	\$54.78
29 Aug	\$140.40	\$92.85	\$82.35	\$54.78
05 Sep	\$123.30	\$83.85	\$76.35	\$54.78

Changes to 2009 Product:

NEW FOR 2010

Trans-Canada Rail Adventure with post-tour Cruise (Westbound)

2010 Package Tour Prices

RedLeaf Service						
Starts Toronto	Single	Double	Triple	Child	Rail Seat Upgrade per Adult Child	Accommodation
25 Apr	\$8,199	\$5,569	\$5,089	\$3,199	\$880	Toronto Hilton Garden Inn
02 May–09 May	\$8,899	\$5,899	\$5,299	\$3,199	\$880	Jasper Whistlers Inn
16 May	\$9,099	\$5,999	\$5,359	\$3,199	\$880	Lake Louise Fairmont Chateau Lake Louise, Fairmont room
23 May	\$9,699	\$6,399	\$5,669	\$3,199	\$880	Banff Banff Ptarmigan Inn
30 May	\$11,199	\$7,499	\$6,739	\$4,269	\$880	Vancouver Cascadia Hotel and Suites
06 Jun–18 Jul	\$11,499	\$7,669	\$6,839	\$4,269	\$880	
01 Aug	\$11,199	\$7,499	\$6,739	\$4,269	\$880	
15 Aug–22 Aug	\$10,689	\$7,249	\$6,579	\$4,269	\$880	
29 Aug	\$10,619	\$7,199	\$6,559	\$4,269	\$880	
05 Sep	\$10,049	\$6,939	\$6,399	\$4,269	\$880	
Modified American Plan	\$887 per adult / \$465 per child					

GoldLeaf Service						
Starts Toronto	Single	Double	Triple	Child	Accommodation	
25 Apr	\$9,999	\$6,999	\$6,519	\$4,499	Toronto	Fairmont Royal York, Fairmont room
02 May–09 May	\$11,069	\$7,459	\$6,799	\$4,499	Jasper	Fairmont Jasper Park Lodge, Fairmont room
16 May	\$11,269	\$7,559	\$6,869	\$4,499	Lake Louise	Fairmont Chateau Lake Louise, Fairmont Lakeview room
23 May	\$11,949	\$7,999	\$7,199	\$4,499		
30 May	\$13,989	\$9,359	\$8,339	\$5,289	Banff	Fairmont Banff Springs, Fairmont room
06 Jun–18 Jul	\$14,289	\$9,499	\$8,429	\$5,289	Vancouver	Fairmont Hotel Vancouver, Fairmont room
01 Aug	\$13,989	\$9,359	\$8,339	\$5,289		
15 Aug–22 Aug	\$13,469	\$9,099	\$8,179	\$5,289		
29 Aug	\$13,399	\$9,069	\$8,169	\$5,289		
05 Sep	\$12,889	\$8,799	\$7,999	\$5,289		
Modified American Plan	\$1,166 per adult / \$549 per child					

Fairmont Deluxe & GoldLeaf Service						
Starts Toronto	Single	Double	Triple	Child	Accommodation	
25 Apr	\$11,279	\$7,569	\$6,719	\$3,899	Toronto	Fairmont Royal York, Deluxe room
02 May–09 May	\$12,199	\$7,999	\$6,959	\$3,899	Jasper	Fairmont Jasper Park Lodge, Deluxe room
16 May	\$12,389	\$8,099	\$6,999	\$3,899	Lake Louise	Fairmont Chateau Lake Louise, Deluxe Lakeview room
23 May	\$13,119	\$8,579	\$7,419	\$3,899		
30 May	\$15,179	\$9,899	\$8,559	\$4,749	Banff	Fairmont Banff Springs, Deluxe room
06 Jun–18 Jul	\$15,479	\$9,999	\$8,649	\$4,749	Vancouver	Fairmont Pacific Rim, Deluxe Harbour View room
01 Aug	\$15,179	\$9,899	\$8,559	\$4,749		
15 Aug–22 Aug	\$14,679	\$9,699	\$8,399	\$4,749		
29 Aug	\$14,629	\$9,679	\$8,399	\$4,749		
05 Sep	\$14,129	\$9,439	\$8,269	\$4,749		
Modified American Plan	\$1,206 per adult / \$569 per child					

2010 Package Tour Start Dates:

Starts Toronto (Westbound)

Sundays

Apr 25
 May 2 9 16 23 30
 Jun 6 13 20
 Jul 4 18
 Aug 1 15 22 29
 Sep 5

